



BRIGHTON DUNES, ADELAIDE

**COASTAL RETIREMENT LIVING
NEVER LOOKED SO GOOD**

Coastal living is glorious but there's no denying the elements can wreak absolute havoc on building materials! No one knows this more than the window-and-door experts at Packers, especially after doing battle with hundred-kilometre-an-hour winds at the five-star Brighton Dunes retirement living building on Adelaide's seafront.

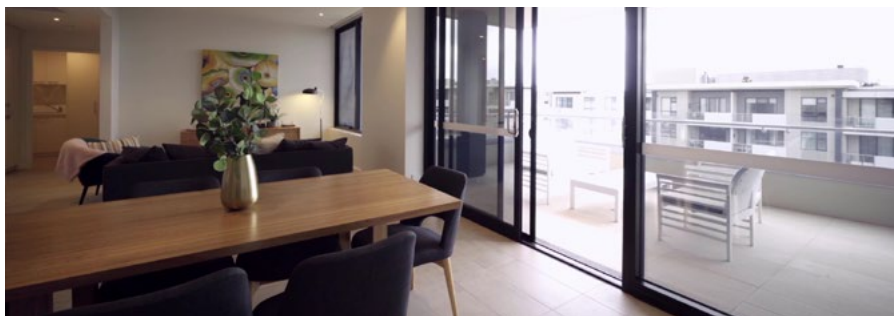
According to Production Manager, Matthew Morrissey, the project presented two main challenges. Firstly, "Everything in retirement living is about having flush

transitions," he says, "so we had to come up with a drain system and the AWS FlowTHRU™ drains seemed to be the perfect product." But there was a hitch. While all the building's sliding windows and doors had to comply with a strict 600 water rating, the FlowTHRU™ had only been water-tested to 350. Matthew and his team approached AWS to see if they could come up with a solution. In response, AWS extruded a new, wider 70-millimetre seal, increased the drain outlet from five millimetres to 90 millimetres, and sent the lot to New Zealand where testing took place and the system

received the official tick of approval. The windows and doors were then installed continuously around the exterior of the building.

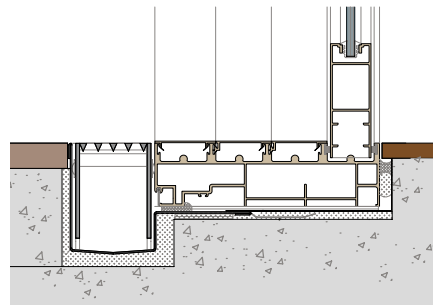
The project incorporates massive awning sashes – 2.1 metres high by 1200mm wide - so that open windows won't impact the look of the façade. "It's about an 85-kilo awning sash because it's double-glazed, so we had to use a dedicated head and seal. We even made a mock-up in our factory that sat there for about six months before the project was being built...just to make sure there was no twisting or breaking down of the sash joints themselves over that period. The result's been really, really good. We've had two or three really big stormfronts come through and it's been holding up to the conditions really well!"

For more information, visit:
awsflowthru.com.au



AWS FLOWTHRU™

- × A flush threshold between internal and external living environments has become an increasingly popular feature in architecturally designed homes and commercial building applications. In addition to creating seamless transition between living spaces, the inclusion of a flush threshold minimises the risk of trips and falls and ensures ease of accessibility.
- × The FlowTHRU solution works seamlessly with Vantage® and Elevate™ sliding door and bi-fold door systems where a flush sill is desired. The AWS FlowTHRU™ drain is the only fully tested threshold drainage solution available for Vantage® and Elevate™ door systems.



Located in Norwood, South Australia, Packers will provide you with technical advice, design expertise and quality workmanship to ensure the highest quality products for your project. A family owned business that have been doing windows and doors for the past 7 years.

2D & 3D CAD Files Available | Download from **specifyaws.com.au** to use in your projects.

For more information on this and the AWS FlowTHRU™ visit **awsflowthru.com.au/**

