



SEBASTIAN HOUSE

■ MUSIC AND BEAUTY: TAKE A BOW! GUY SEBASTIAN'S NEW HOME WORTHY OF A STANDING OVATION.

Winner of the first Australian Idol in 2003, Guy Sebastian has gone on to become one of Australia's most loved singer/songwriters. So, when AWS was asked to supply the windows and doors for his family's dream home, we couldn't have been more excited.

When architect, Joe Snell, first met Guy and his wife, Jules, it was a dream come true.

"They said, 'we love concrete, we love steel, we love glass, we love black and white' so it was a pretty amazing brief."

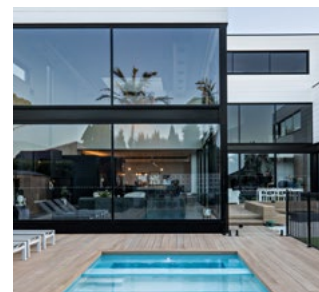
Snell knew he wanted to create an elegant façade of concrete. "I worked out the maximum size of concrete panel we could fit on a truck and then the panels were jigsawed. At no point is a concrete panel ever penetrated. Instead, the windows are formed in the negative between two panels coming together. So when you see the building there's actually what I think is a very beautiful language of intersection of panels."

AWS | PROJECT FEATURE

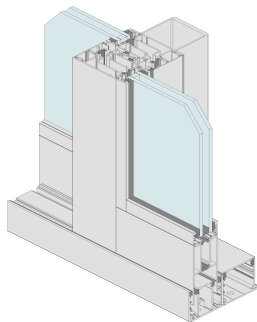
The first thing visitors to the home see when they walk in the door is Guy's piano. The house then drops away on both sides. "You go down to one living/kitchen area and dining and then you go down to another living area which has sort of become the kids' area. The courtyard pushes into the middle of those two living spaces. Then you pull the doors back – these huge three-panelled doors, they come right back – and suddenly all the dining and living areas become one big space."

"I used a lot of black steel and beautiful windows from AWS and glass. What we did is very difficult actually. For example, on the end of the house that faces the pool I thought I was going to have to do two vertical mullions but working with AWS we worked really hard to reduce that down to a singular mullion. And to me it was very important to achieve that because when it's one mullion you just see glass ... That was a big, big win for the project and AWS were great in helping me achieve that."

For the full feature and gallery, visit:
thermalheart.com.au



Architect: Joe Snell. Photographer: The Palm Co Photography.



THERMALHEART® THERMALLY BROKEN SLIDING DOOR

Bring the outside in, with secure, elegant and energy efficient, ThermalHEART sliding doors.

- × ThermalHEART sliding doors minimise heat or cold transfer, and provide excellent energy efficiency
- × Can be configured as a single or stacking sliding door..

- × Ideal for commercial and high-end residential applications, choose between heavy-duty bottom rolling stainless steel bearings or Centor top-hung rollers.
- × Compatible with Centor screens which retreat into the door frame when not in use.

Maximum Panel Height: 2800mm
Maximum Panel Width: 2500mm
Maximum Glass Thickness: ≤28mm



Our focus is always on you, your needs and getting the perfect finished product for your requirements, no matter how big or small. Our professional service, industry experience and eye for detail means you can count on us for all your aluminium and glass needs. Servicing Sydney.
P: (02) 9517 4400 | E: info@orionaluminium.com.au

2D & 3D CAD Files Available | Download from specifyaws.com.au to use in your projects.

For more information on this and the rest of the Vantage® range: vantagewindows.com.au

