



## 102 WAKEFIELD

### CURTAIN WALLS GO UP IN THE CITY OF CHURCHES

When Cheesman Architects were commissioned to design the new 14 level commercial high rise at 102 Wakefield Street, thermal and solar comfort were paramount for both occupant comfort and reducing dependency on Adelaide's straining energy grid.

The hot mediterranean climate calls for high performing solar and thermal comfort in the summer months and high water ratings and thermal comfort throughout winter. Modernist design favouring large glass façades results in a greater need for high performing window and curtain wall systems.

The Elevate™ Series 168 TS Curtain Wall was selected by Cheesman Architects due to the thermal performance ratings offered across the Thermally Broken and Thermally Shielded Curtain Wall systems. The addition of sun fins not only added a textural aesthetic, but a solar performance element benefitting the western façade.

The unique design of the Elevate™ Curtain Wall system ensures sun fins are thermally isolated from the mullions to prevent heat transmission – critical on long summer afternoons.

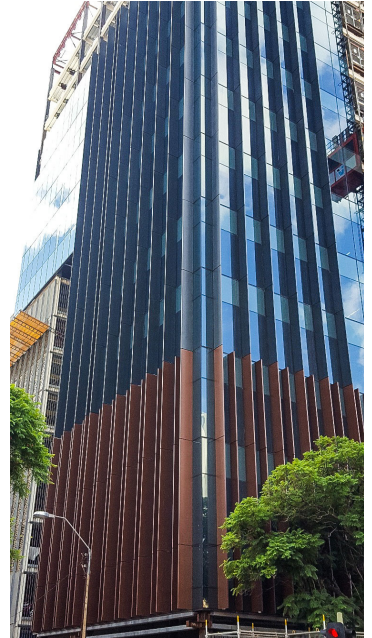
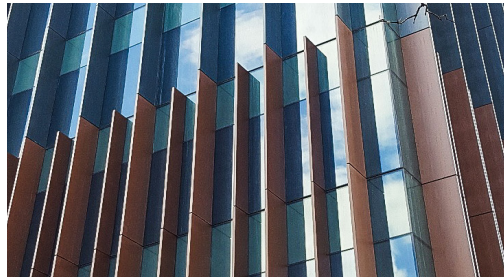
## AWS | PROJECT FEATURE

While AWS Fabricator, Urban Windows and Doors had the ability to fabricate a full Thermally Broken Curtain Wall system, the design skills from Cheesman Architects allowed a Thermally Shielded Series 168 Curtain Wall to be used delivering Uw Value as low as 2.4. A matt black powder coat finish was selected for the Curtain Wall units while the Interpon™ Sable CoreTen™ powdercoat was used on the protruding sun fins, mimicking the distinctive appearance of corten steel.

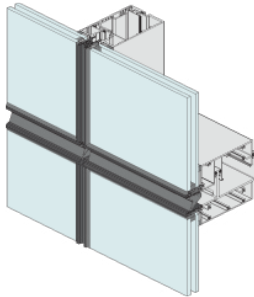
The Series 168 Curtain Wall system was designed, produced, powder coated and manufactured in Australia by AWS and supplied to Urban Windows in Adelaide for custom fabrication.

A tight manufacturing and quality assurance schedule was then implemented at Urban Windows and Doors new purpose built factory and showroom on Humphries Terrace, Kilkeny.

For the full feature and gallery, visit:  
[elevatealuminium.com.au](http://elevatealuminium.com.au)



Architect: Cheesman Architects Builder: Kyren Group



### ■ SERIES 168 CURTAIN WALL

- × Series 168 Curtain Wall can be fabricated as a full aluminium system with Thermal Shielding or Thermally Broken mullions and transoms to achieve excellent energy efficiency and thermal performance values.
- × The system has been designed with minimal machining to reduce labour times and improve efficiency.
- × Mullion is reinforced (thickened) at structural fixing bolt locations.
- × Will accept sun fin brackets which do not puncture the mullion weather legs. The mullion is thickened at sun fin bracket fixing locations.
- × Mullion members extruded in T6 alloy for added strength - offering improved ultimate strength numbers.
- × Tested for compliance with relevant Australian Standards achieving a water resistance of 1124Pa.
- × Will accept insulating glass units (IGU's) up to 32mm thick.

Maximum Panel Height: 3600mm  
Maximum Panel Width: 1800mm  
Maximum Glass Thickness: ≤ 32mm



UrbanWindows & Doors is a young and progressive Adelaide building company which supplies modern and contemporary architecturally designed aluminium window and door systems to both South Australia's residential and commercial construction markets.  
P: (08) 8443 8849 | E: [info@urbanglass.com.au](mailto:info@urbanglass.com.au)

2D & 3D CAD Files Available | Download from [specifyaws.com.au](http://specifyaws.com.au) to use in your projects.

For more information on this and the rest of the Vantage® range: [vantagewindows.com.au](http://vantagewindows.com.au)

