



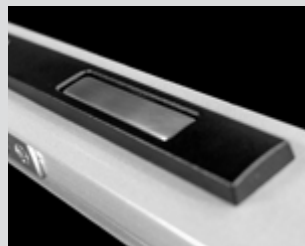
KEY FEATURES

- Compact streamlined window lock with recessed finger grab for neat, flush finish.
- Neat low profile appearance.
- Designed for use with Vantage Residential Designer series or Elevate™ Commercial Architectural series.
- Push handle tab into body to slide window open. Turn key to lock.
- Matt finish with Enduratec™ delivers up to 10 times the corrosion resistance compared to traditional powder coating.
- Available in black, white and silver.



FINISH

Matt finish with AWS' Enduratec™ technology delivers up to 10 times the corrosion resistance compared to traditional powder coating.



EASY OPERATION

MIRO™ Sliding Window Lock is easily opened by depressing the push button. To lock depress the pull handle. Key lockable.



SECURE MORTICE LOCK

Mortice lock is securely fixed to window stile. Keeper is recessed into jamb. Latch operated by depressing finger grab.

DIMENSIONS

| | |
|--------|-------|
| Height | 190mm |
| Width | 24mm |
| Depth | 7mm |

SUITABLE FOR USE WITH

- Series 601 Designer Sliding Window
- Series 602 Designer Sliding Window
- Series 461 Apartment Sliding Window
- Series 462 Architectural Sliding Window
- Series 662 Architectural Sliding Window 150mm